

# Main Event Judges

**Todd Schabel**, Oils, schabelfineart.com  
**James Faecke**, Watercolor, jamesfaecke.com  
**Shelby Keefe**, Oils, shelbystudio.com

## Awards

### Main Event

Best of Show • \$3000 Purchase Award from *Ozaukee Bank's Gift to the Future Fund*. The award-winning painting will be part of Cedarburg Art Museum's permanent collection.

2nd Place • \$1000

3rd Place • \$500

Honorable Mentions (4) • \$250 each

### Best of the City of Cedarburg

1st Place *Sandra McCutcheon Pape Award* • \$500

2nd Place • \$300

3rd Place • \$150

Honorable Mentions (3) • \$50 each

### Paint the Lake

1st Place • \$500 from *Bridget and Matt Deloge & Katherine de Shazer*

2nd Place • \$300 from *Robert Powell*

Honorable Mentions (2) • \$50 each from *Robert Powell*

### Best Nocturne

1st Place • \$300

2nd Place • \$100

Honorable Mentions (2) • \$50 each

### Artists' Choice

1st Place • \$300

2nd Place • \$200

*Note: Each artist may win only one award, except the Artists' Choice Award. Artists awarded more than \$550 must complete a Federal W-9 Form prior to receiving the award.*

# Schedule at a Glance

## Saturday, June 8<sup>th</sup>, 2024, *Plein Air: A Paint Cedarburg Event opens today!*

8:00-12:00 pm Check-in & Materials Stamping, Cedarburg Art Museum (CAM)  
Day & Night Artists paint throughout Cedarburg boundaries

## Sunday, June 9<sup>th</sup>, 2024, *Fresh From Cedarburg is our kick-off event!*

8:00-10:00 am Check-in & Materials Stamping, CAM  
Until 2:00 pm Artists paint throughout Cedarburg boundaries  
2:00-3:00 pm Artists bring easels & unlimited completed paintings (chair, snacks, drinks optional; bottled water provided) to Cedarburg City Hall Lawn (CCHL). Rain location is Cedarburg Community gym next to CCHL.  
3:00-5:00 pm Paintings exhibited & for sale on CCHL.

## Monday, June 10<sup>th</sup>, 2024 & Tuesday, June 11<sup>th</sup>, 2024, *Main Event*

8:00-10:00 am Check-in & Materials Stamping, CAM  
Day & Night Artists paint throughout Ozaukee County  
6:00-7:00 pm Artists' Social, Washington House Inn (WHI)

## Wednesday, June 12<sup>th</sup>, 2024, *Main Event*

8:00-10:00 am Check-in & Materials Stamping, CAM  
6:00-8:00 pm Artists' Social, Art Of Joy (AOJ)

## Thursday, June 13<sup>th</sup>, 2024, *Main Event*

8:00-11:00 am Drop off up to 3 completed paintings at (CCC)  
**All paintings must be framed.**  
2:00-7:00 pm Judging takes place at CCC.  
3:00-5:00 pm Artists' Soiree, CAM

## Friday, June 14<sup>th</sup>, 2024

12:00-1:30pm Artist Choice Voting, CCC  
2:00 pm Award Winners Announced, CCC  
2:00-5:00 pm Collectors' Invitational Gallery Sales, CCC  
5:00-8:00 pm Public Opening & Gallery Sales, CCC

## Saturday, June 15<sup>th</sup>, 2024

10am-5:00 pm Gallery Sales, CCC  
5:00-6:30 pm Pick Up Paintings, CCC  
**Optional:** Drop off unsold paintings for *Plein Air Continues*, CCC

### Location Key

AOJ Art Of Joy, W63N664 Washington Avenue  
CAM Cedarburg Art Museum, W63N675 Washington Avenue  
CCC Cedarburg Cultural Center, W63N546 Washington Avenue  
CCHL Cedarburg City Hall Lawn, W63N645 Washington Avenue  
WHI Washington House Inn, W62N573 Washington Avenue

## Places Of Painting Interest

The following locations are located in Ozaukee County. Locations that open AFTER sunrise and close BEFORE sunset are noted with an asterisk; however, the artist is responsible for verifying hours for their chosen locations. Additional venues can be found at cedarburg.org, ozaukee.wi.us, ozaukeetourism.com, treasuresofoz.org, and owl.org (only Ozaukee Co.)

**Cedarburg Art Museum**, W63N67 Washington Avenue, Cedarburg. This is a grand building of red brick and classical architecture.

**Covered Bridge Park**, Cedar Creek & Covered Bridge Roads north of Highway 60. The Covered Bridge is the sole surviving covered bridge in Wisconsin.

**Downtown Cedarburg Historic District**. Our collectors have a strong history of buying paintings of the iconic images in the historic downtown.

**Forest Beach Migratory Preserve**, 4979 Country Club Road, Belgium. Forests, ravines, wetlands, grasslands, prairies and migratory birds on Lake Michigan.

**Harrington Beach State Park**, 531 City Highway D, Belgium. One mile of sandy beach on Lake Michigan, wetland pond and limestone quarry. Entrance fee \$.

\***Lion's Den Gorge Nature Preserve**, 511 High Bluff Drive, Grafton. Enjoy ½ mile of 90-100' bluffs with tremendous views of Lake Michigan.

**Mequon Nature Preserve**, 8200 W. County Line Road, Mequon. Restored natural habitat with trails, wetlands, fields and an observation tower. Pet friendly.

**Ozaukee County Historical Society**, N57W6406 Center Street, Cedarburg. Cedarburg's former train depot and Cream City brick building.

**Port Washington harbor and historic downtown**. A quaint respite with large, boat-filled harbor and ongoing fishing. Charming downtown businesses and historic churches.

**Riveredge Nature Center**, 4458 County Highway Y, Saukville. Ten miles of trails through forests, prairies and Milwaukee River frontage. Entrance fee \$.

**Sauk Creek Nature Preserve**, 3210 County Highway KK, Port Washington. Follow the creek as it flows over limestone bedrock ledges and a small waterfall.

\***Virmond Park**, 10606 N. Lake Shore Drive, Mequon. The 63-acre park has breathtaking panoramic views from the bluffs that overlook Lake Michigan.

**Wisconsin Museum of Quilts and Fibert Arts**, N50W5050 Portland Road, Cedarburg. The Museum is housed in a repurposed 1850's barn.

### Liability

Regardless of cause, the artist agrees to bear all risk and expense for any loss, theft or damage to their artwork or other personal property or injury to their person. The artist agrees to be responsible for insuring their artwork and to abide by all rules set by the Cedarburg Artists Guild.

## Event Guidelines

### Plein Air Requirements

A minimum of 95% of each painting must be created on-site in the true spirit of plein air painting. Only minor adjustments may be made in the studio. **All paintings must be framed.**

### Painting Boundaries

*Fresh From Cedarburg*, June 8<sup>th</sup>-9<sup>th</sup> – Cedarburg boundaries (see map)

*Main Event*, June 8<sup>th</sup>-June 12<sup>th</sup> – Throughout Ozaukee County (see map)

### Painting Pick-Up

All paintings must be picked up from the Cedarburg Cultural Center on Saturday, June 15<sup>th</sup> between 5:00-6:30 pm. Paintings must be checked out with a Paint Cedarburg committee member. Optional: Unsold paintings may be entered into the Cultural Center's show, *Plein Air in Cedarburg Continues*. For this show, which runs from June 20<sup>th</sup>-July 13, drop-off and sign-up takes place across the room immediately following Plein Air pick-up; paintings can be picked up on July 14<sup>th</sup>.

### Media & Surfaces

Media may include oils, acrylics, watercolors, pastels and gouache. For dark-colored surfaces, please paint a white patch on the back to provide a legible stamping area.

### Check-In & Stamping

An unlimited number of painting surfaces MUST be stamped prior to starting to paint. For after-hours check-in & stamping, contact Kandy Gibson, 414-630-6037

### Disqualification

A painting will be disqualified from *Plein Air: A Cedarburg Paint Event* if the artist is found using an iPad or photos on their easel, if the artist is standing outside the boundaries, and/or if the artist sells off easel prior to 3:00 pm on Sunday for *Fresh From Cedarburg*.

### Commissions

The Cedarburg Cultural Center will retain a 35% commission on all painting sales. Artist payments will be mailed to the address provided at registration within two weeks following the end of the event.

### Off-Easel or Post-Exhibit Sales

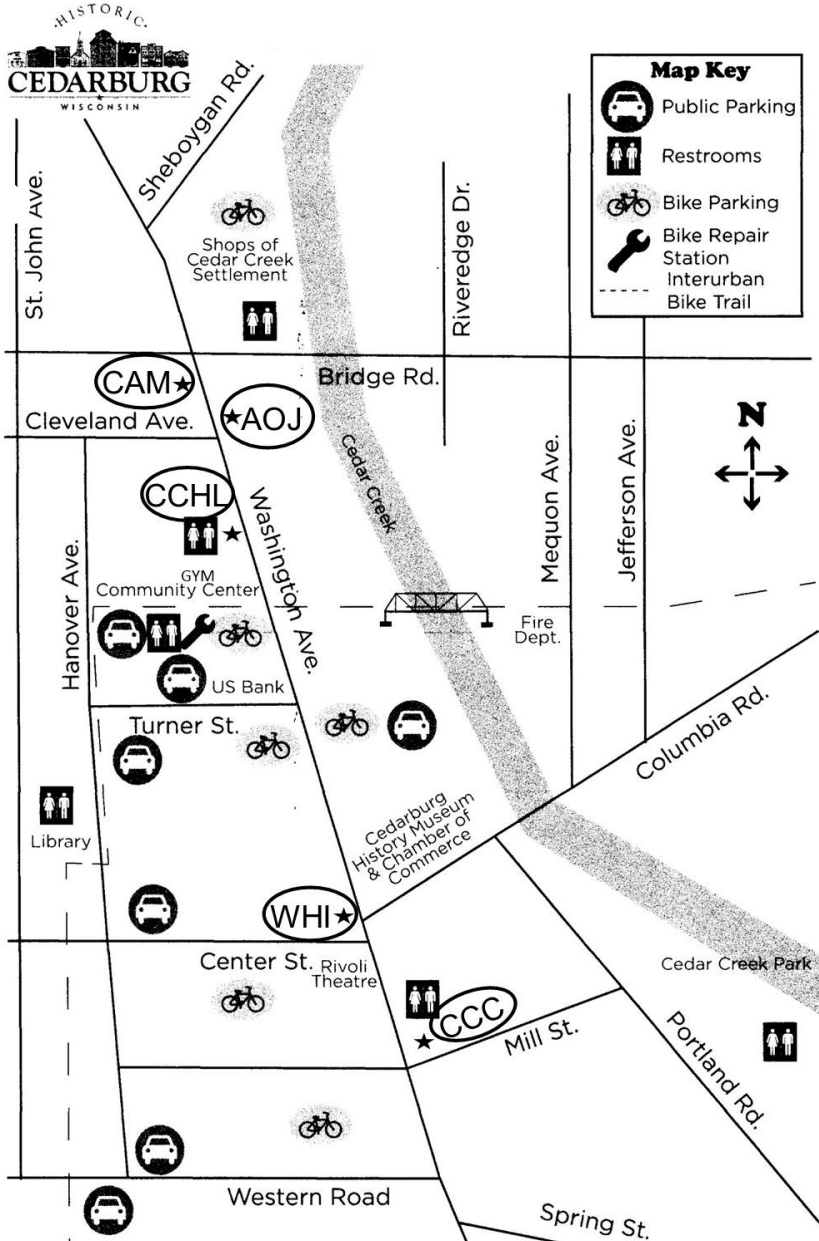
Off-easel sales begin Monday, June 10<sup>th</sup>. Please respect the substantial volunteer effort and cost expended to attract collectors and coordinate this event by paying a 10% finder's fee on all off-easel and post-exhibit sales. Fees may be given to the Paint Cedarburg committee cashier at CCC. Please make checks payable to Cedarburg Artists Guild, P.O. Box 663, Cedarburg, WI, 53012. Please provide the buyer's name, address and email so we may invite them to the Collector's Invitational Sale next year!







# Cedarburg Key Event Locations



★	AOJ	Art Of Joy, W63N664 Washington Avenue
	CAM	Cedarburg Art Museum, W63N675 Washington Avenue
	CCC	Cedarburg Cultural Center, W63N546 Washington Avenue
	CCHL	Cedarburg City Hall Lawn, W63N645 Washington Avenue
	WHI	Washington House Inn, W62N573 Washington Avenue

# Fresh From Cedarburg Boundaries



**Fresh From Cedarburg Boundaries:** North = Cedar Sauk Rd

East = 1st Ave      South = Pioneer Rd      West = Wausauke Rd

*Fresh From Cedarburg* is an optional event. Create an unlimited number of stamped paintings from 8:00 am Saturday, June 8<sup>th</sup>, to 2:00 pm Sunday, June 9<sup>th</sup>, within Cedarburg boundaries. Check-in 2-2:45 pm Cedarburg City Hall Lawn (CCHL). Public Sale 3-5:00 pm, CCHL. Unsold paintings (up to 3) may be submitted on Thursday in the *Main Event*.